

Safety Relay Boards FGR 52-6

Universal DIN-Rail Mount Board with two 6-pole force guided Relays

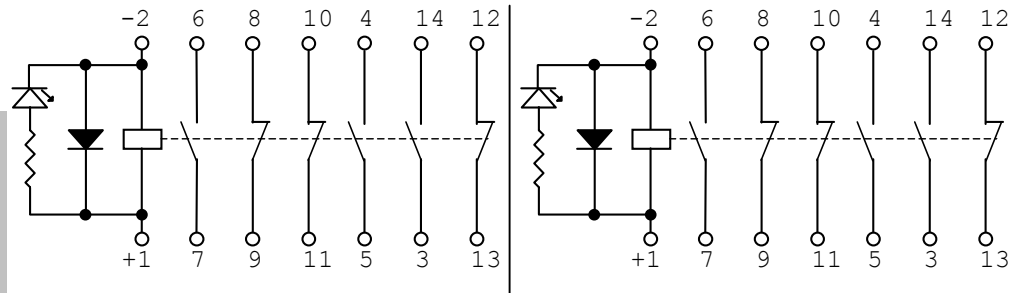
Wiring Diagrams for **FGR52** with **FGR35-6pole** and **D-OA 56.12** Relays

Installation Remarks

- Turn off all power supplies before any installation work.
- Be aware of all safety rules and guidelines of OSHA and other associations as they apply.
- Installer and/or operator must be a qualified professional.
- Do not demount the unit or remove any wires while relay operates.
- Conductor cross section 0.08 to 2.5 mm² (AWG 28 to 14)

All dimensions shown are metric (mm)

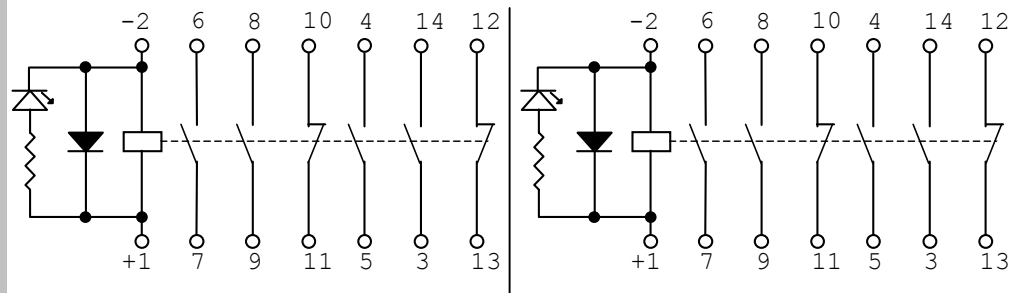
For conversion:
1 mm = 0.03937 inch
1 inch = 25.40 mm



Relay 1

Wiring Diagram 330: 3NO/3NC

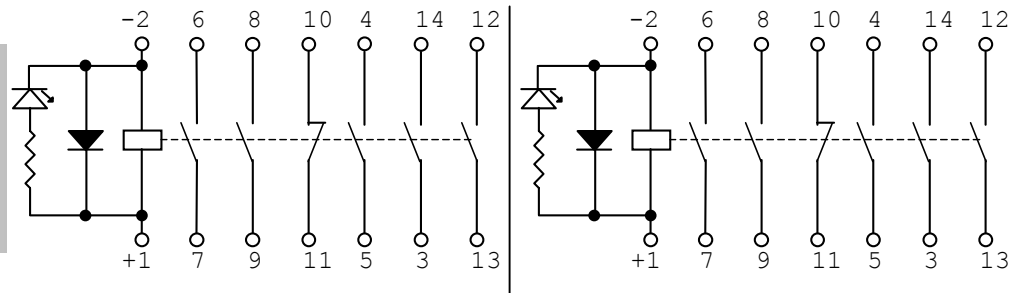
Relay



Relay 1

Wiring Diagram 420: 4NO/2NC

Relay



Relay 1

Wiring Diagram 510: 5NO/1NC

Relay

Dimensions

Width: 89.6 mm (3.53 inch)
Length: 92.5 mm (3.64 inch)
Height: See table below (depends on relay brand and relay type)

* Maximum unit Height		PCB mount		Socket mount	
BRAND	TYPE	mm	inch	mm	inch
FGR	FGR35-6p	61.5	2.42	71.5	2.82
DOLD	OA56.12	60.3	2.38	NA	NA

